

**THYROID**



- TSH
- Free T3
- Free T4
- Total T3
- Total T4
- TGAb
- TPOAb
- TG
- CT

**FERTILITY**



- Total hCGβ
- Estradiol
- Progesterone
- Testosterone
- Prolactin
- FSH
- LH
- AMH
- hGH

**TUMOR MARKER**



- AFP
- CEA
- CA 125
- CA 15-3
- CA 19-9
- CA50
- Total PSA
- Free PSA
- SCC
- NSE
- PGI
- PGI1
- HE4
- CYFRA21-1
- CA242
- CA72-4

**PRENATAL SCREENING**



- AFP
- Free hCGβ
- uE3
- PAPP-A
- Prenatal Screening Software

**KIDNEY FUNCTION**



- NGAL
- β2-MG
- Cys-C
- RBP
- H-ALB

**HEPATIC FIBROSIS**



- CG
- PIIINP
- CIV
- LN
- HA

**DIABETES**



- Insulin
- C-Peptide
- INS-Ab\*
- GAD 65\*

**BONE METABOLISM**



- 25-OH-Vit D Total
- Intact PTH
- BGP

**CARDIAC MARKER**



- Troponin I
- H-FABP
- CK-MB
- MYO
- D-Dimer
- NT-ProBNP

**INFLAMMATION**



- PCT
- CRP
- IL-6

**ANEMIA**



- Ferritin
- Folate\*
- Vitamin B12\*

**INFECTIOUS DISEASES**



- HBsAg
- HBsAb
- HBeAg
- HBeAb
- HBcAb
- Anti-HCV
- Anti-TP

**TORCH**



- Toxo IgG
- Toxo IgM
- Rubella IgG
- Rubella IgM
- CMV IgG
- CMV IgM
- HSV-1 IgG\*
- HSV-1 IgM\*
- HSV-2 IgG\*
- HSV-2 IgM\*

**ALLERGY**



- Ig E

\* Under development & improvement

# CIA 600

Chemiluminescence Immunoassay Analyzer

Smart size Remarkable value



# CIA 600

## Wash Station



- Three pairs of washing needles for washing
- The inner wall of the needle is coated with Teflon to avoid further cross-contamination

## Reaction cuvettes area



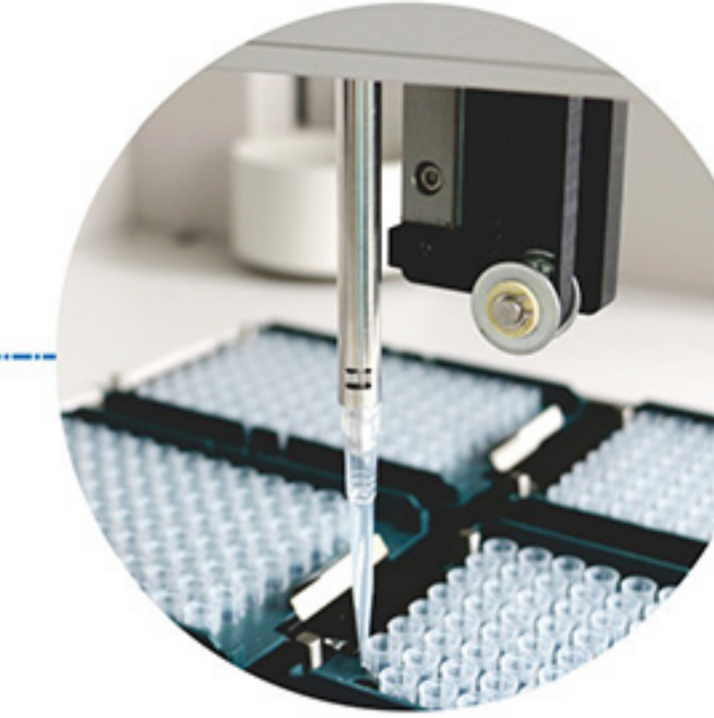
- Single use cuvette
- Up to 288 pcs on board (96 pcs/rack, 3 racks)  
Continuous loading

## Sample loading by barcode reading

Throughput:  
Up to 60 tests per hour

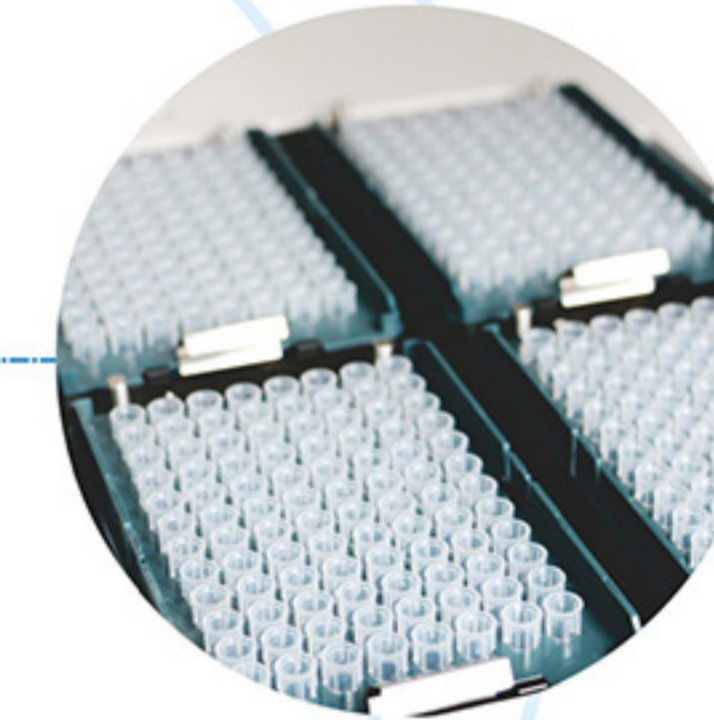
Smart size: benchtop, 80kg,  
92cm(H) X 63cm(W) X 64cm(D)

## ADP



- High sensitivity liquid detection by integrated pressure sensor with 20ul dead volume
- No washing step and maintenance free

## Tips area



- Disposal tips for sampling and reagent pipetting
- Up to 384 pcs on board (96 pcs/rack, 4 racks)  
• Continuous loading



## Sample and reagent area



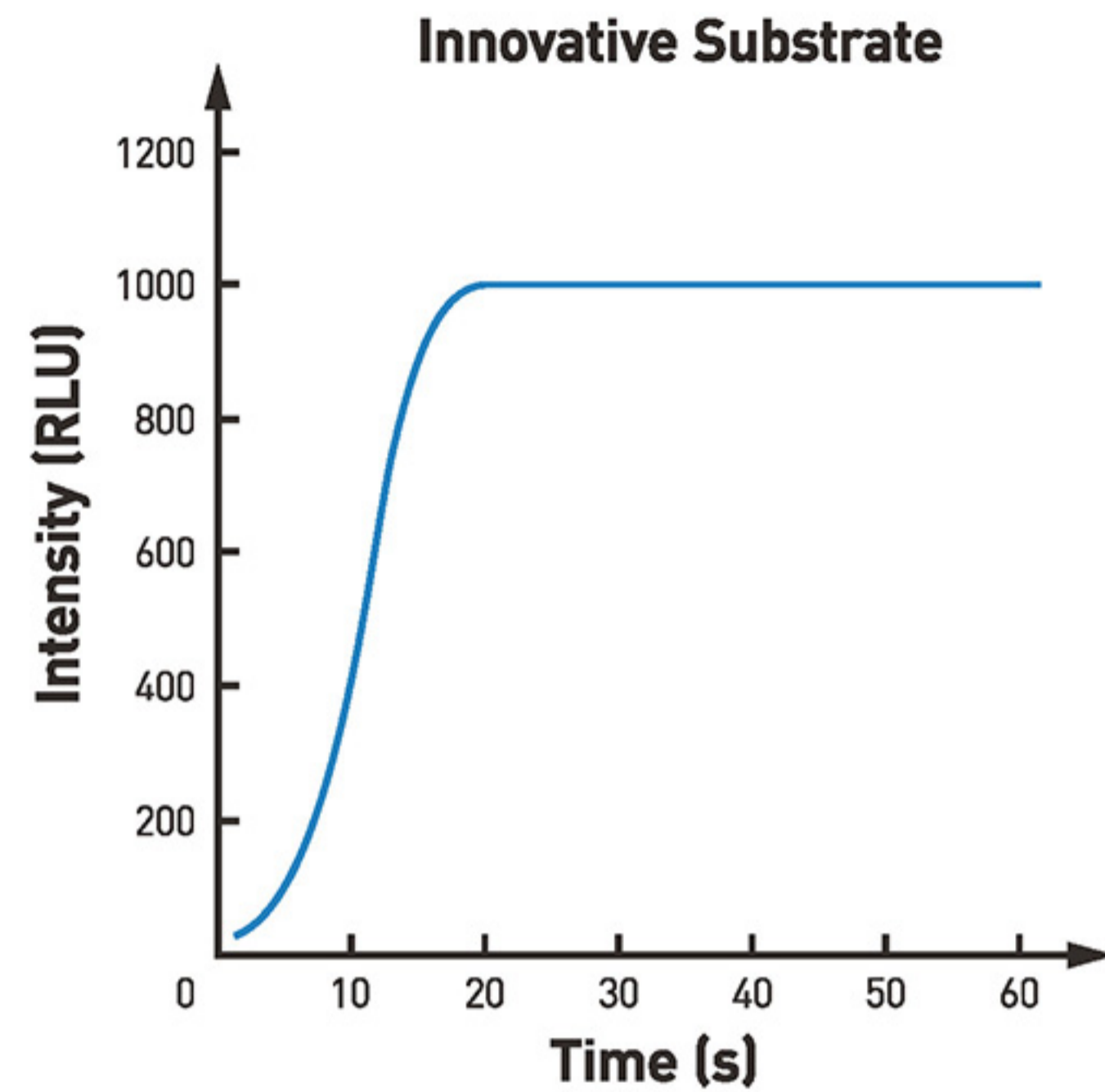
- Customize the reagent and sample area on 16 tracks
- Support 1 to 15 reagent kits on board.
- Maximum 75 samples on board
- Continuous loading sample and reagent

## Reagent loading by RFID reader



## Key Technologies

- Principle: Glow Chemiluminescence
- Labeling: Alkaline Phosphatase (ALP)
- Separation: Magnetic Microbeads
- FITC/ anti-FITC connected bridge



- Reaction within 20 seconds

## ZECEN CIA Test Kits

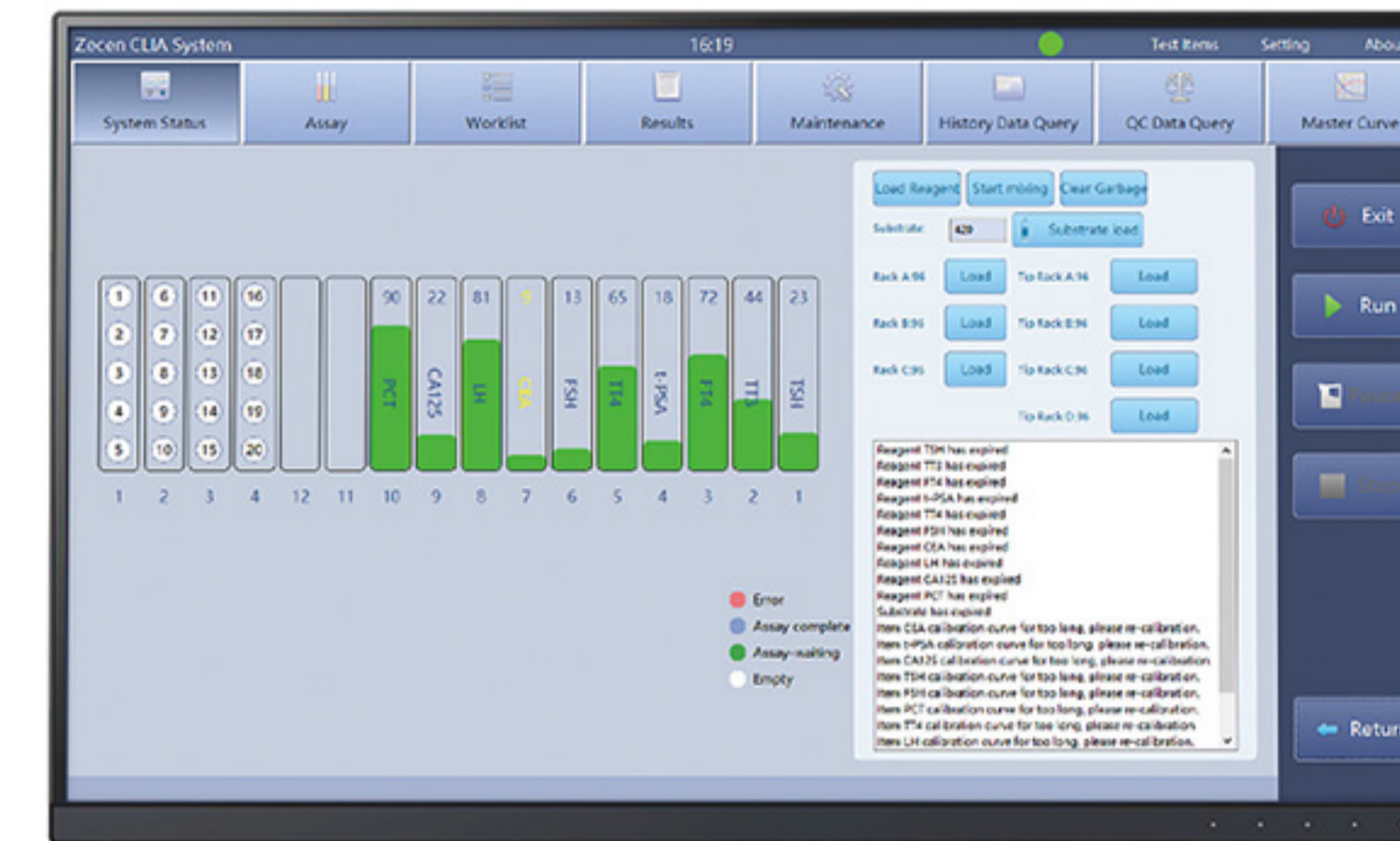
- 50/100 tests package
- Integrated kits, ready-to-use
- Calibrators and QC included
- 2-point calibration
- Free calibration and QC testing
- Calibration stability: Max 4 weeks
- Open-pack stability: Up to 4 weeks



## CIA Software

*Intuitive User Interface, Intelligent Data Management*

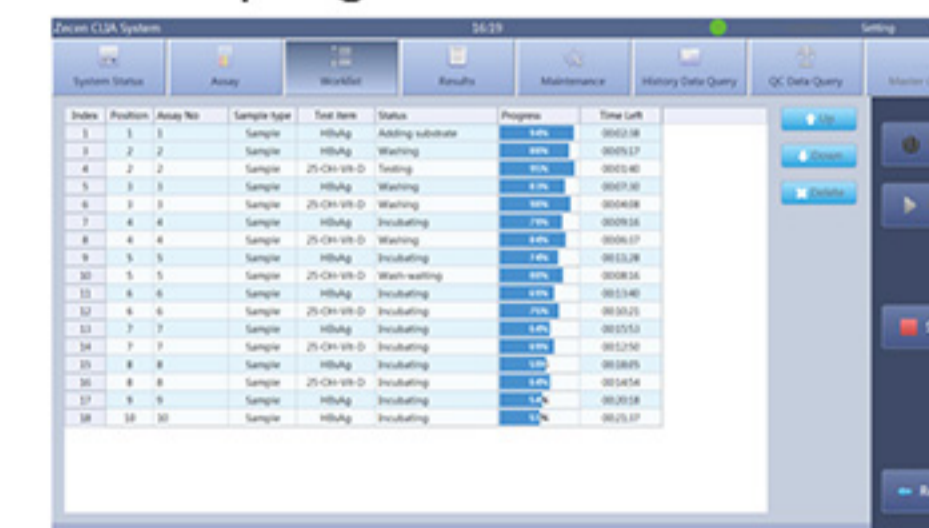
### Easy to use:



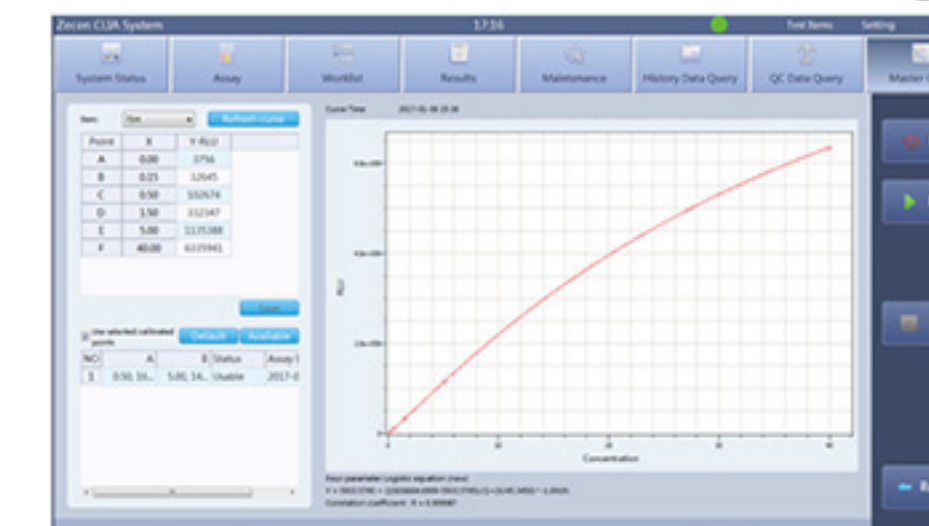
- Flexible sample test mode: STAT function, automatic dilution, reset function, continuous loading
- Reagent management: the remaining amount, calibration validity, expiry date management
- Consumables management: continuous monitoring and low-level warning
- Result management: store search, print and statistics, automatic unit conversion function
- LIS/HIS connection
- Auto daily maintenance

### Data quality assurance

- Test progress real-time monitoring



- Re-calibration record management



- QC data management



- History data can be searched and traced back

